

New Jersey Peace Action
673 Bloomfield Avenue
Bloomfield, NJ 07003

ADDRESS SERVICE REQUESTED

NONPROFIT ORG.
U.S. POSTAGE
PAID
NEWARK, NJ
07102
PERMIT NO. 743

NJ Peace Action's 60th Birthday Bash! Saturday, November 18th



Diane Gallo

- Former President, NJ SANE/Freeze, now NJ Peace Action; active member for many years;
- Active member of local League of

Women Voters - Summit, New Providence, Berkeley Heights area;

- President of the Board, Dreamcatcher Repertory Theatre, a professional company based in Summit;
- Active in promoting the arts, on the board of Summit Public Art;
- Peace delegate to the Democratic National Convention, 1988;
- Involved in many local and state-wide organizations over the years;
- Graduate of Douglass College/Rutgers University;
- Practicing pastel artist.



Bill Hartung is the director of the Arms and Security Project at the Center for International Policy and the author of Prophets of War: Lockheed

Martin and the Making of the Military Complex. He is also a standup comic who has appeared at numerous venues in New York and DC, including Gotham Comedy Club, the Comedy Cellar at the Cafe Underground, Standup New York, the Comic Strip, and Dangerfield's.

www.ciponline.org/about-us/experts-staff/william_hartung

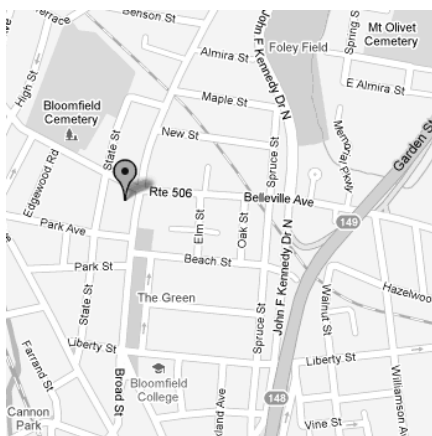


Singer **Jeanne Lozier** and guitarist **Don Leich** have know each other from the New Jersey blues music scene for about 25 years.

They have performed together innumerable times, either at area jam sessions, or at area clubs sitting in with the other's band. Jeanne is an active NJPA member. Don a board member. They are teaming up to deliver a set of anti-war songs.

www.jannelozier.com
fbl.me/JerseySwampCats

Directions to Bloomfield High School



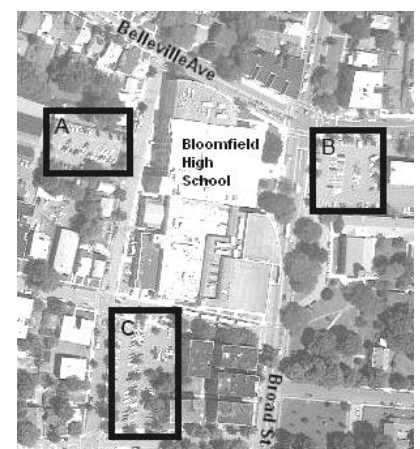
Garden State Parkway North:

Take Exit 148 - Bloomfield Avenue.

Cross over Bloomfield Avenue to Franklin Street, which is the next light. Turn left on Franklin Street. Stay on Franklin Street to Broad Street. Continue on Broad Street for approximately two long blocks. Bloomfield High School is on the left side.

Garden State Parkway South:

Take Exit 149 - Bellevue Avenue.



A, B, C: parking lot locations

Come to the end of the ramp. Make a left on to JFK Drive. Make the first right on to Beech Street. Take Beech Street to the end, which will intersect with Broad Street. Make a right onto Broad Street. Continue on Broad Street approximately 1 block. Bloomfield High School is on the left side.

